



Avikus

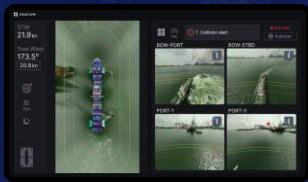
HiNAS

HiNAS

Hyundai Intelligent Navigation Assistant System

One and only “all-in-one ADAS solution for ship” in the market

HiNAS is an advanced ship navigation assistance system, comparable to automotive advanced driver-assistance systems (ADAS), designed to enhance operational safety and efficiency. As a Level 2 autonomous solution, it supports the captain and bridge crew by providing critical navigational insights.



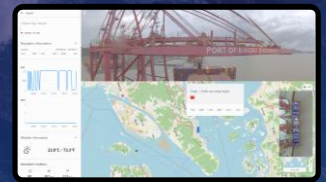
HiNAS SVM



HiNAS Navigation



HiNAS Control



HiNAS Cloud

Enhanced Situational Awareness

Autonomous Navigation

Onshore Fleet Management

Value Proposition of **HiNAS**



HiNAS SVM: “A 360-degree Solution for Enhanced Safety”

360-Degree Real-Time View, Zoom-In/Out Function, Distance Guide, Individual Camera View, Video Recording, Object Recognition, AIS/ARPA Visualization

HiNAS Navigation: “Advanced Situational Awareness for Safer Voyages”

Integrated Display, Enhanced Visibility, Remote Monitoring, Night Vision Capability, Incident Recording

HiNAS Control: “Leading the Path to Autonomous Navigation”

Advanced Autonomous Navigation, Collision Avoidance Control, Optimal RPM Management, Automatic Route and Speed Tracking

HiNAS Cloud: “Seamless Monitoring and Playback for Proactive Fleet Management”

Real-Time Observability, Playback Function, Operational Efficiency, Seamless Integration, Scalable and Customizable, Low-bandwidth Solution

SVM (Surround View Monitoring)

HiNAS SVM provides a real-time 360-degree view also providing AR distance guides, object recognition, and AIS/ARPA visualization for safe berthing.

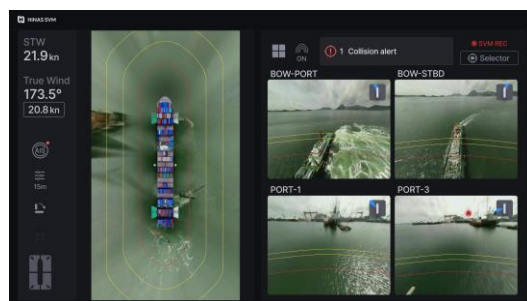
360-Degree Real-Time View

Provides a seamless, real-time top-view of the vessel's surroundings with a full-screen live stitched display.



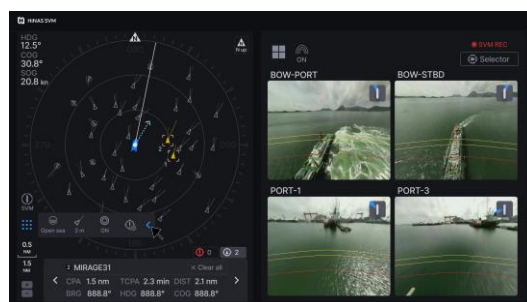
Distance Guide

AR-based distance guides with equidistance lines precisely monitor vessel proximity to surrounding objects.



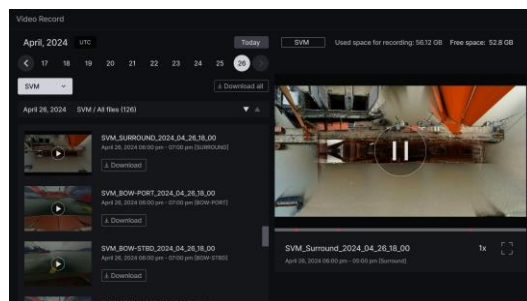
AIS/ARPA Visualization

Displays AIS/ARPA data on a map, highlighting collision risks up to 60 meters and key locational details for safe berthing.



Video Recording

Stores up to 30 days of recorded video for training, incident reporting, or review.

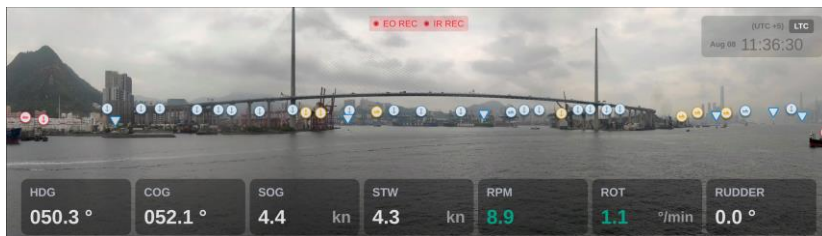


Navigation

HiNAS Navigation enhances maritime safety and efficiency by providing advanced situational awareness through cutting-edge technologies like computer vision, sensor fusion, and deep learning.

Enhanced Safety

Detects targets via camera, radar, and AIS, offering early collision risk warnings.



Night Vision Capability

Uses IR cameras for enhanced target detection in low-visibility conditions.



Integrated Display

Replaces analog indicators with a customizable digital display, consolidating navigation data into a single widescreen interface.



Video Recording

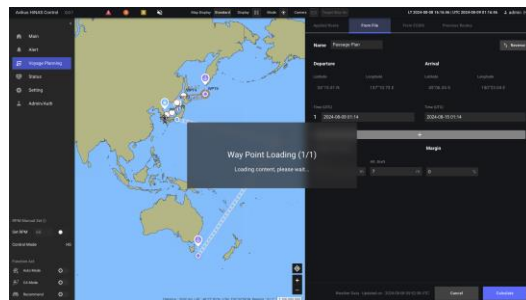
Offers 30-day video recording for incident review and operational analysis.

Control

HiNAS Control leverages advanced technologies and automation to enhance navigation safety, optimize fuel efficiency, and support crew decision-making, ensuring reliable and efficient maritime navigation within an operational envelope.

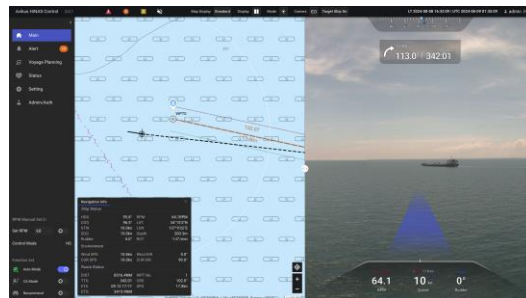
Optimal Speed Management

Optimizes RPM in real-time automatically for fuel efficiency, factoring in weather, ship dynamics, loading conditions and ETA.



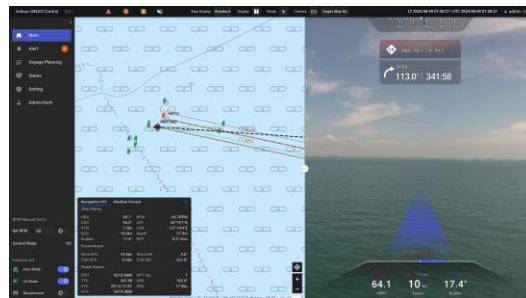
Automatic Route and Speed Tracking

Follows the ECDIS passage plan and adjusts RPM for fuel efficiency and safety in complex environments.



Collision Avoidance Control

Adapts and enhances human navigation and captain expertise to ensure COLREGs-compliant, safe operations.



Cloud

HiNAS Cloud is a cutting-edge platform enabling real-time fleet monitoring and playback analysis, seamlessly integrating with HiNAS systems to enhance safety and operational efficiency for on-shore teams.

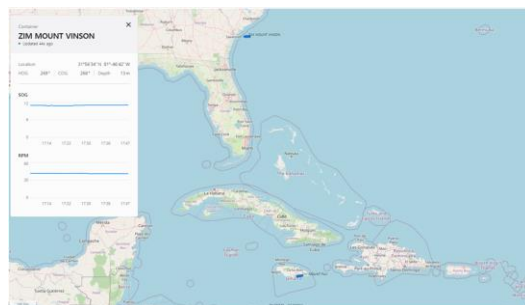
Operational Efficiency

Provides a dashboard to track events and trends. Streamlining fleet management while ensuring adherence to safety and navigational procedures.



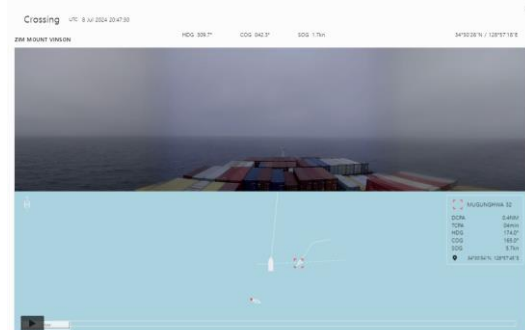
Real-Time Observability

Offers near real-time live streaming for situational awareness and proactive risk management.



Playback Functionality

Enables event replay for analysis, training, performance optimization and aiding incident investigation.





avikus.ai

Copyright © 2024, Avikus Co. Ltd

11F, 70, Nonhyeon-ro 85-gil, Gangnam-gu,
06234 Seoul, Republic of Korea